

## MS® Membrane Filter



MS® Membrane Filter includes Nylon, PTFE, PES, MCE, PVDF, PP and CA

**MS® Nylon membrane filter** is supported, naturally hydrophilic membrane filter designed for aqueous solutions and most organic solvents. Flexible, durable and autoclavable to 135° C.

**MS®PTFE membrane filter** is micro-pore film applied to biochemistry, microelectronic, lab material and etc for gas and liquid filtration.

**MS®PES membrane filter** is of highly asymmetrical pore structure for high dirt holding capacity, increasing the filtration performance to give higher throughputs and flow rates.

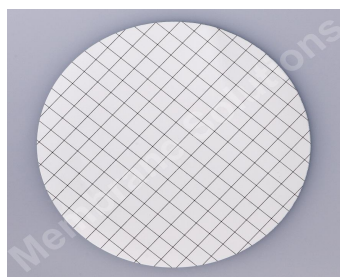
**MS®MCE membrane filter** is characterized by smooth and more uniform surface than pure nitrocellulose filter. Also, the color contrast provided by the filter surface facilitates particle detection and minimizes eye fatigue.



**MS®PVDF membrane filter** with reinforced-type hydrophobic PVDF membrane, it ensures wet air and other gas pass through smoothly, even when the differential pressure is very low. It holds the opposite capability against PVDF hydrophilic membrane.

**MS®PP membrane filter** are composed of pure polypropylene with absolute pore size ratings, offering broad chemical compatibility allowing. The PP filter has extremely low extractable levels designed to provide accurate, consistent analysis results for sensitive ion chromatography applications while prolonging column life.

**MS® CA membrane filter** is composed of pure cellulose acetate modified to offer the lowest



MS® Sterile Gridded MCE Membrane Filters filter is unsupported naturally hydrophilic membrane, ideal for Colony Counting and Sterility Testing. .

**White Gridded MCE membrane filters** are designed for:

General examination of all microorganisms  
Recovery and retention of E. Coli bacteria in water/wastewater analysis  
Other microbiological tests

**Black Gridded MCE membrane filters** are available for:

Automatic colony counting applications  
Gridded to assist in manual counting procedures  
Analysis of yeast and mold and Legionella sp.  
Examination of White, beige colonies.

They provide clear contrast between residue or cell colors and the filter without having to counter stain the membrane.



MS® Easy-Pack™ are sterile-sealed without protective paper, placed on a band in individual packages. This special setting ensures each membrane filter will stay perfectly flat when they are dispensed.

\* Convenient operation \* Less risk of accidental contamination \* Saving time

# MS® Membrane Filter

## Quality Certification Order Information

\* each batch produced under **strict quality control** process including raw material selection/production inspection/warehouse approval tests/quality assurance before shipping

Item No.	Membrane	Pore	Diameter	Item No.	Membrane	Pore	Diameter
MFNY013022	Nylon	0.22	13	MFMC013022	MCE	0.22	13
MFNY025022	Nylon	0.22	25	MFMC025022	MCE	0.22	25
MFNY047022	Nylon	0.22	47	MFMC037022	MCE	0.22	37
MFNY013045	Nylon	0.45	13	MFMC047022	MCE	0.22	47
MFNY025045	Nylon	0.45	25	MFMC013045	MCE	0.45	13
MFNY047045	Nylon	0.45	47	MFMC025045	MCE	0.45	25
MFCA013022	CA	0.22	13	MFMC037045	MCE	0.45	37
MFCA025022	CA	0.22	25	MFMC047045	MCE	0.45	47
MFCA047022	CA	0.22	47	MFMC047022GBN	MCE Gridded Black	0.22	47
MFCA013045	CA	0.45	13	MFMC047045GBN	MCE Gridded Black	0.45	47
MFCA025045	CA	0.45	25	MFMC047080GBN	MCE Gridded Black	0.8	47
MFCA047045	CA	0.45	47	MFMC047022GWN	MCE Gridded white	0.22	47
MFPES013022	PES	0.22	13	MFMC047045GWN	MCE Gridded white	0.45	47
MFPES025022	PES	0.22	25	MFMC047080GWN	MCE Gridded white	0.8	47
MFPES047022	PES	0.22	47	MFPTFE013022B	hydrophobic PTFE	0.22	13
MFPES013045	PES	0.45	13	MFPTFE025022B	hydrophobic PTFE	0.22	25
MFPES025045	PES	0.45	25	MFPTFE047022B	hydrophobic PTFE	0.22	47
MFPES047045	PES	0.45	47	MFPTFE013045B	hydrophobic PTFE	0.45	13
MFPVDF013022	PVDF	0.22	13	MFPTFE025045B	hydrophobic PTFE	0.45	25
MFPVDF025022	PVDF	0.22	25	MFPTFE047045B	hydrophobic PTFE	0.45	47
MFPVDF047022	PVDF	0.22	47				
MFPVDF013045	PVDF	0.45	13				
MFPVDF025045	PVDF	0.45	25				
MFPVDF047045	PVDF	0.45	47				



Membrane Solutions Co., Ltd.  
Tel: 1-866-528-4572 Fax: 1-732-412-4040  
E-mail: info@membrane-solutions.com  
www.membrane-solutions.com

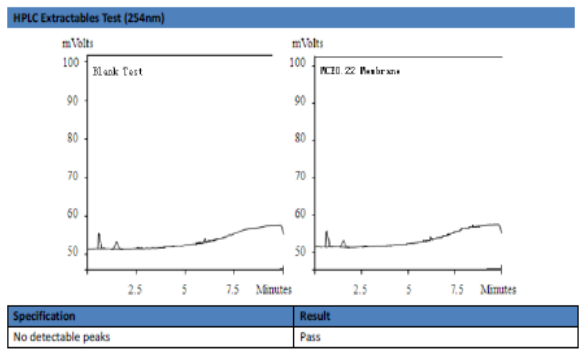
### Quality Certificate

MCE Membrane Filter	Part Number: MFMC025022
	Lot Number: 140318012

**ISO 9001 Quality Standard**  
The product was manufactured in the Membrane Solutions facility whose Quality Management System is approved by an accredited registering body to the ISO 9001 Quality Systems Standard.

Membrane Filter Lot Characterization			
Filter Media	Mixed Cellulose Ester	Wettability	Hydrophilic
Color	White	Thickness(µm)	100-160
Pore Size(µm)	0.22	Bubble Point (psig)	52-82.5
Diameter(mm)	25	Flow Rate(ml/min/cm <sup>2</sup> @10psi)	8.5-15.5

Bubble point and Flow rate were tested by water at 25°C.



We hereby certify that the above stated membranes are in compliance with all applicable instructions. This certificate shall not be copied or reproduced without the written approval of Membrane Solutions LLC. The document contains information that may be confidential and is intended only for the use of the addressee.

Tested By: *[Signature]* 03/19/2014  
QC Technician



## Membrane Filter Selection Guide

