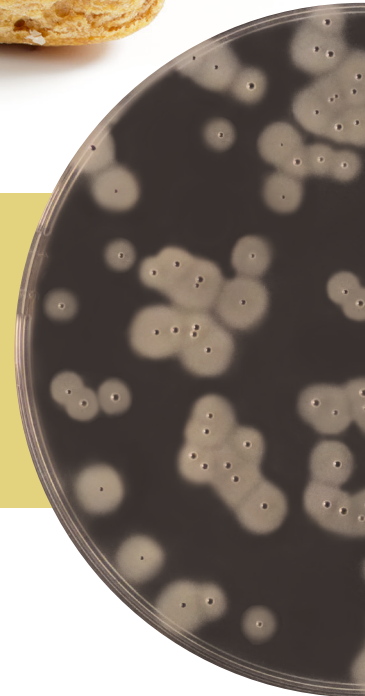




EASY Staph[®]

ENUMERATION OF COAGULASE-POSITIVE STAPHYLOCOCCI IN HUMAN
AND ANIMAL FOOD PRODUCTS AND ENVIRONMENTAL SAMPLES



RELIABLE

Validated method by AFNOR Certification according to ISO/FDIS 16140-2 standard

PERFORMANCE

Detection of all coagulase-positive staphylococci including enterotoxigenic strains
S. hyicus and *S. intermedius*

SIMPLE

Single protocol for all the categories of food products

RAPID

Enumeration of coagulase-positive *Staphylococcus* within 22 hours

ECONOMIC

Direct reading of colonies surrounded with halo without confirmation



EASY Staph®

EASY Staph® method allows the rapid enumeration of coagulase-positive staphylococci in human and animal food products and environmental samples



Validated by AFNOR Certification under the reference BKR 23/10-12/15 for human food products.



(x) g of sample + 9 (x) mL of diluent ¹

SURFACE INOCULATION

Transfer 0.1 mL of sample onto pre-poured plates of **EASY Staph® agar** ²

POUR PLATE INOCULATION

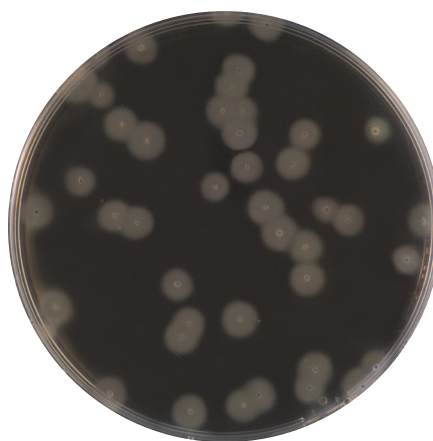
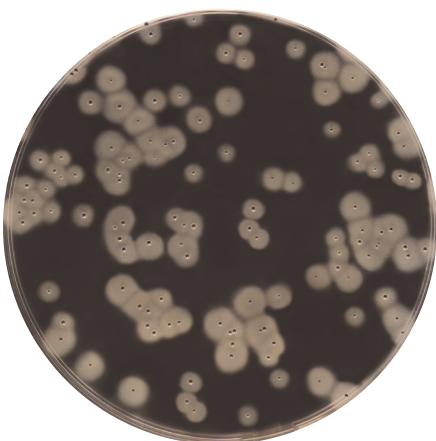
Transfer 1 mL of sample to the bottom of empty sterile Petri dish and add approximately 15 mL of **EASY Staph® agar**

Mix and let solidify

⌚ Incubation **24 ± 2 h** at **37 ± 1°C**

J+1

Reading ³ and enumeration of characteristic colonies



Coagulase-positive *Staphylococcus* :
Colonies surrounded by
an opaque halo of fibrin

To know

¹ Buffer peptone water, tryptone-salt or any other diluent recommended by the corresponding part of NF EN ISO 6887 standard.

² The inoculation may be realized by manual streaking or spiral method in exponential mode with 50 or 100 µL.

³ Reading may be realized after 22 to 72 hours of incubation for pour plate inoculation and spiral method and 22 to 48 hours for surface inoculation.

**EASY Staph®
Agar**

NF EN ISO 6888-2
: Horizontal
method for the
enumeration
of coagulase
positive
staphylococci

J+1

J+2

Please refer to the technical data sheet for more information.

To order

Surface inoculation

EASY Staph® Agar - Pre-poured

BM18708 - 20 Petri dishes (Ø90 mm)
BM19008 - 120 Petri dishes (Ø90 mm)

Pour plate inoculation

EASY Staph® Agar - Kit

BT01208 - 6 vials of 190 mL of base +
6 vials of supplement qsp 200 mL
BT01308 - 6 vials of 90 mL of base +
6 vials of supplement qsp 100 mL