

# CELLSTAR® Cell-Repellent Surface

## Cell culture vessels for suspension and spheroid culture

Greiner Bio-One introduces a new surface chemistry to effectively inhibit cell adhesion. Characterised by low cell attachment, the cell-repellent surface is ideal for applications such as

- Spheroid cultures and stem cell aggregate formation
- Suspension culture of semi-adherent and adherent cells (e.g. for suspension culture of macrophages)
- Methylcellulose or other gel-based cultures

Achieved through an innovative chemical polymer modification, Greiner Bio-One's cell-repellent surface does not degrade or leach under common cell culture conditions, rendering an ideal substrate for native cell culture experiments.

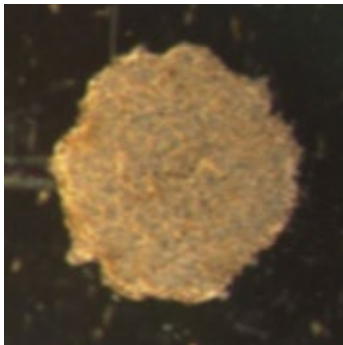


Figure 1: LNCaP spheroid

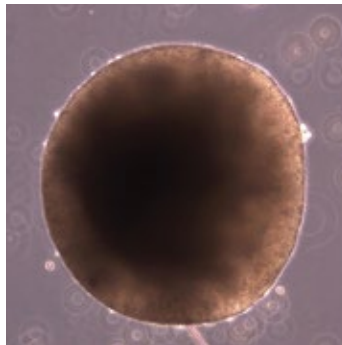
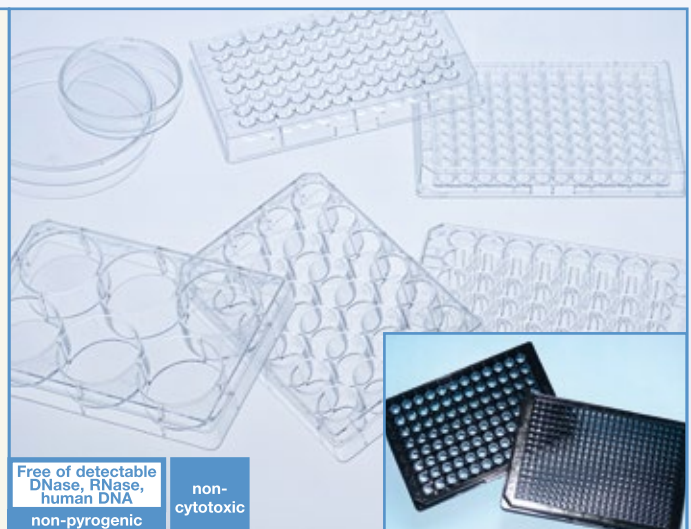


Figure 2: iPSC aggregate formation

### Key Facts

- Effectively inhibits cell adhesion
- 4 years shelf life
- Sterile
- Other formats available on request



Free of detectable  
DNase, RNase,  
human DNA  
non-pyrogenic

non-  
cytotoxic

Ordering Information			
Cat. No.	Product Description	Qty./Bag	Qty./Case.
627 979	Cell Culture Dish, Ø 35 x 10 mm, PS, cell-repellent surface, clear, sterile	10	40
628 979	Cell Culture Dish, Ø 60 x 15 mm, PS, cell-repellent surface, clear, sterile	10	20
664 970	Cell Culture Dish, Ø 100 x 20 mm, PS, cell-repellent surface, clear, sterile	1	5
657 970	6 Well Multiwell Plate, PS, cell-repellent surface, clear, sterile, with lid	1	5
662 970	24 Well Multiwell Plate, PS, cell-repellent surface, clear, sterile, with lid	1	5
677 970	48 Well Multiwell Plate, PS, cell-repellent surface, clear, sterile, with lid	1	5
655 970	96 Well Microplate, PS, F-bottom/chimney well, cell-repellent surface, clear, sterile, with lid	1	6
655 976	96 Well Microplate, PS, F-bottom/chimney well, cell-repellent surface, black, µClear®, sterile, with lid	8	32
655 976-SIN	96 Well Microplate, PS, F-bottom/chimney well, cell-repellent surface, black, µClear®, sterile, with lid	1	32
650 970	96 Well Microplate, PS, U-bottom, cell-repellent surface, clear, sterile, with lid	1	6
651 970	96 Well Microplate, PS, V-bottom, cell-repellent surface, clear, sterile, with lid	1	6
781 970	384 Well Microplate, PS, cell-repellent surface, clear, sterile, with lid	1	60
781 976	384 Well Microplate, PS, cell-repellent surface, black, µClear®, sterile, with lid	8	32
781 976-SIN	384 Well Microplate, PS, cell-repellent surface, black, µClear®, sterile, with lid	1	32