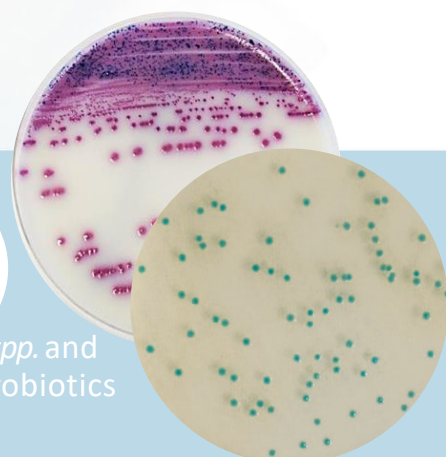




Crono & Salmo DUO (CSD)

Detection of *Cronobacter* spp. from a common enrichment of *Salmonella* spp. and *Cronobacter* spp. in infant formula and infant cereals with or without probiotics including ingredient and production environment samples.



RELIABLE

Method validated by AFNOR Certification according to NF EN ISO 16140-2

SIMPLE AND ECONOMIC

Simultaneous enrichment of *Salmonella* spp. and *Cronobacter* spp.

PRACTICAL

Possibility of pooling with a 1/4 dilution.



Supplement Crono & Salmo DUO (CSD)

The principle is based on detection of *Salmonella* spp. and *Cronobacter* spp. from a common enrichment with CSD supplement.

Salmonella spp.



Cronobacter spp.



Validated by AFNOR Certification under the reference BKR 23/12-12/20 (*Cronobacter* spp.) and BKR 23/07-10/11 (*Salmonella* spp.)

To know

1The dilution step can be carried out on the 10th scale for weighing from 10 to 50 g and on the 1/4 scale for weighing from 50 to 375 g. Preheat the broth for weighting from 50 to 375 g.

2In the protocol involving a 1/4 dilution, the buffered peptone water «**salmonella enrichment**» can be used for acidic samples. For samples with fat content ≥ 20 % use **Salmonella enrichment + Tween 80**.

3Please refer to the data sheet of IRIS Salmonella® Agar and CCI Agar for more information.

(x) g sample in 9 (x) mL or (x) g sample in 3 (x) mL¹
of *Salmonella* broth Enrichment²

+

Introduce 0.1 mL/g sample of
Supplement Crono & Salmo DUO (CSD)

+

Addition of α-amylase for cereals (0.1 g/L)

⊕ Incubation **16 to 22 h** at 41.5 ± 1°C for weighs up to 50g
or

⊕ Incubation **18 to 24 h** at 41.5 ± 1°C for weighs from 50 to 375g

D+1

Inoculating 10 µL on
IRIS Salmonella® Agar

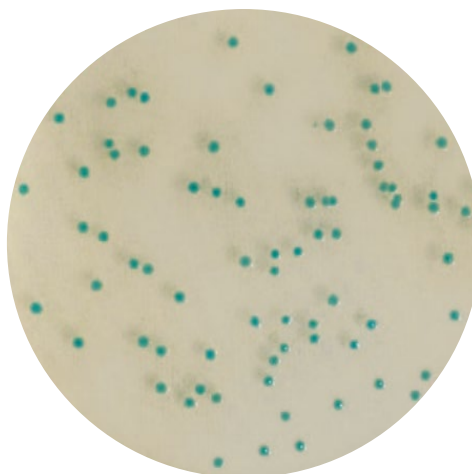
⊕ Incubation
24 ± 3h
37 ± 1.0°C



Characteristic magenta colonies:
PRESUMPTIVE PRESENCE of
*Salmonella*³

Inoculating 10 µL sur
CCI Agar

⊕ Incubation
24 ± 3h
41.5 ± 1°C



Characteristic blue colonies :
PRESUMPTIVE PRESENCE of
*Cronobacter*³

D+1

Ordering information

Supplement Crono & Salmo DUO (CSD)

BS09508- 10 vials of 100 mL
BS09908- Tablets Qs 10 g
BS10008- Tablets Qs 25 g

Salmonella Enrichissement

BK194HA- Bottle 500 g
BK194GC- Drum 5 kg
BM13608- 10 vials of 225 mL
BM13708- 3 flexible bags of 3 L
BM14408- 2 flexible bags of 5 L

Salmonella Enrich. double-strength

BM20008- 2 flexible bags of 5 L
BM20108- 10 vials of 225 mL

Salmonella Enrich. + Tween 80

BM16308- 3 flexible bags of 3 L
BM19908- 2 flexible bags of 5 L

Salmonella Enrich. double-strength + Tween 80

BM22008- 2 flexible bags of 5 L

IRIS Salmonella® Agar

BM16008- 20 Petri plates (Ø90 mm)
BM16108- 120 Petri plates (Ø90 mm)

CCI Agar

BM15408- 20 Petri plates (Ø90 mm)
BM22608- 120 Petri plates (Ø90 mm)