



COMPASS[®] *Bacillus Plus*

DETECTION AND ENUMERATION OF SPECIES BELONGING TO *BACILLUS CEREUS* GROUP
IN HUMAN AND ANIMAL FOOD PRODUCTS

RELIABLE

Validated method by AFNOR Certification according to NF EN ISO 16140-2

PERFORMANCE

- Excellent recovery of vegetative and spore forms
- Specific detection of *Bacillus cereus* including *Bacillus cytotoxicus* and strains weak in, or negative for lecithinase production

EASY

Characteristic **BLUE-GREEN** color colony and excellent inhibition of secondary flora

QUICK AND ECONOMIC

Detection and enumeration within 21 hours, without confirmation



COMPASS[®] *Bacillus Plus*

COMPASS[®] *Bacillus cereus* method allows the detection and enumeration of presumptive *Bacillus cereus* in human and animal food products within 21 hours.



Validated by AFNOR Certification under the reference BKR 23/06-02/10



(x) g of sample + 9 (x) mL of diluent ¹

SURFACE INOCULATION

Transfer 0.1 mL onto pre-poured plates of COMPASS[®] *Bacillus cereus* agar ²

POUR PLATE INOCULATION

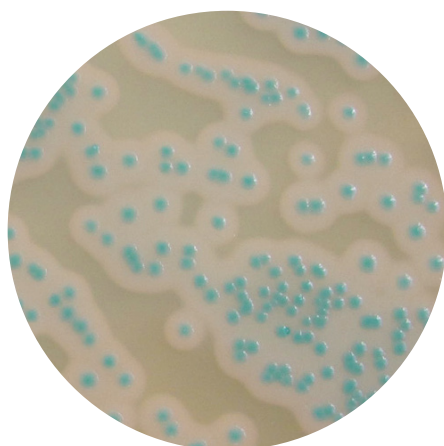
Transfer 1 mL to the bottom of empty sterile Petri dish and add approximately 15 mL of COMPASS[®] *Bacillus cereus* ² medium

Mix and let solidify

⌚ Incubation **21 h to 27 h** at **30 ± 1 °C**

J +1

Reading and enumeration of characteristic colonies ³



Bacillus cereus

Characteristic colony : pale blue-green to blue-green color, with a diameter $\geq 1 \text{ mm}$ ⁴ for surface inoculation and a diameter $\geq 0.5 \text{ mm}$ ⁴ for pour plate inoculation

To know

¹ BPW, Tryptone-salt or any other diluent recommended by the corresponding part of NF EN ISO 6887 standard.

² Prepare COMPASS[®] *Bacillus Plus* medium with a bottle of base, selective supplement and 10mL sterile supplement.

³ Count Petri dishes containing less than 150 characteristic colonies.

⁴ Presence of an opaque halo around *Bacillus cereus* group colonies with phospholipase activity.

COMPASS[®]
Bacillus Plus
Agar

NF EN ISO
7932 : 2005
- Horizontal
method for the
enumeration
of presumptive
Bacillus cereus

1 step
in 21 h

Confirmation

D+1/D+2

J+3

2 steps
in 42 h to 72 h

Please refer to the technical data sheet for more information.

Ordering information

COMPASS[®] *Bacillus Plus* Agar

BM21308 – Petri dishes (Ø 90mm)
BM13008 – 10 flacons 100 mL (base)
BK189HA – 500 g bottle

Selective supplement for COMPASS[®] *Bacillus cereus* Agar

BS06908 – 10 vials qsf 100 mL
BS08508 – 10 vials qsf 500 mL

Sterile egg yolk emulsion BS06608 – 10 vials of 50 mL

Complete supplement for COMPASS[®] *Bacillus Plus* Agar coming soon BS09808 – 10 vials of 50 mL